



## VIFLUTER Group

Founded in 2009, VIFLUTER Group is a national high-tech enterprise and a "Little Giant" specialized and sophisticated enterprise. With over a decade of dedication to the industrial resource recycling sector, VIFLUTER is a leading provider of energy-saving and emission-reduction equipment. Upholding the corporate mission of "Promote resources recycling make the environment better" VIFLUTER is committed to the development and promotion of more energy-efficient evaporators.

The company helps enterprises achieve low-temperature concentration and extraction/separation of materials, evaporation and reduction of high-concentration and complex liquid waste, high-value material extraction, and resource recovery. VIFLUTER supports customers across industries such as biological fermentation, plant extraction, fine chemicals, biopharmaceuticals, coal chemicals, petrochemicals, surface treatment, and hazardous waste disposal, enabling energy savings, emission reductions, cost reduction, and efficiency improvement. With a track record of serving over 2,000 enterprises worldwide, Vifluter maintains an industry-leading project stability rate.



## A More Energy-Efficient Evaporator



Mixed Salt Mother Liquor  
Heavy Metal Wastewater  
High-Salinity Organic Wastewater  
High-Concentration Organic Wastewater  
Oily Industrial Wastewater

## Industrial Wastewater ZLD Solution Provider

Whatapp



[www.vifluter.com](http://www.vifluter.com)

📍 Jinwei Road, Changshu, Jiangsu Province, China

☎ +86 137 6123 5591

✉ Jessica@wsdks.com

Sample info is for reference only; subject to change without notice due to technical updates.

VIFLUTER RESOURCE RECYCLING TECHNOLOGY CO.,LTD.

## Low-temperature Drying Solution for

### Applicable Industries

Fine Chemicals, Coal Chemicals, Petrochemicals, Surface Treatment, Non-Ferrous Metallurgy, Mine Water, Oil & Gas Fields

### Typical Wastewater Types

Pharmaceutical Wastewater, Pesticide Wastewater, Pharmaceutical Intermediates, Heavy Metal Wastewater, Coal Chemical Mixed Salt Mother Liquor, Evaporator Concentrate, Chemical Wastewater Leachate, and other high-salinity, high-organic-content wastewater.

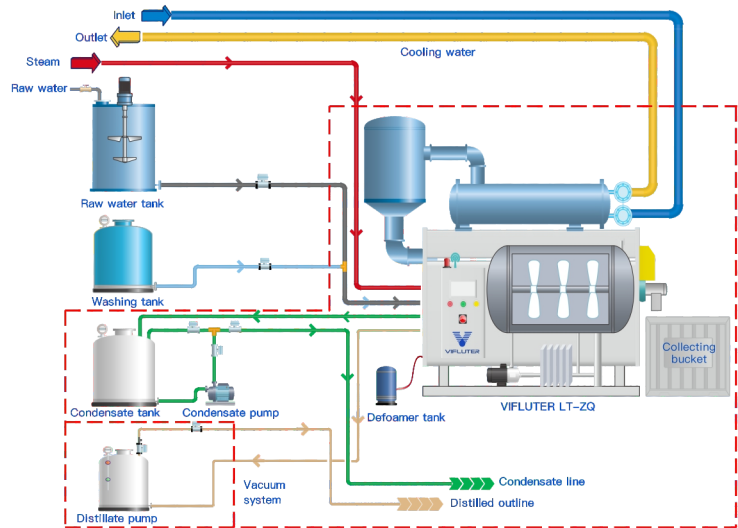


## Skid Modular LTE Drying System

### Specifications

Series	Cap.hr	Power	Consumption		Size(mm)
LTZQ-50	50L	3kW	1~1.2T/T(Steam)	25kW·h/T(Electricity)	1300*2500*2700
LTZQ-150	150L	5kW	1~1.2T/T(Steam)	20kW·h/T(Electricity)	1500*3850*3500
LTZQ-250	250L	7kW	1~1.2T/T(Steam)	15kW·h/T(Electricity)	1550*4500*3800
LTZQ-500	500L	7kW	1~1.2T/T(Steam)	15kW·h/T(Electricity)	1550*4500*3900
LTZQ-750	750L	15kW	1~1.2T/T(Steam)	20kW·h/T(Electricity)	2100*5600*4750

### Process



## Low-temperature Evaporation and Concentration Solution for

### Applicable Industries

Surface Treatment, Mechanical Processing, Semiconductor, New Energy, Hazardous Waste Disposal

### Typical Wastewater Types

Heavy Metal Wastewater, Chemical Nickel Wastewater, Surface Cleaning Wastewater, Phosphating Wastewater, Pickling Wastewater, Cutting Fluid, Emulsified Fluid, Landfill Leachate, and other wastewater.

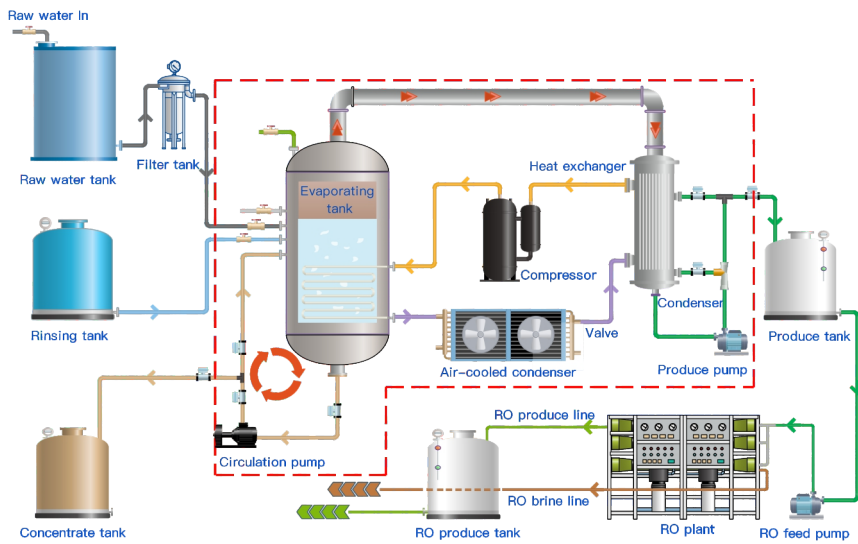


## Skid Modular LTE Concentration System

### Specifications

Series	Cap.hr	Power	Consumption	Size(mm)
LT-1.5T	66L	8.5kW	100~120kW·h/T	1805*1340*2065
LT-2.8T	130L	18kW	100~120kW·h/T	2375*1820*2790
LT-5T	236L	30KW	80~110kW·h/T	2650*1950*2940
LT-8T	330L	40kW	80~110kW·h/T	3475*2150*3270
LT-10T	430L	48KW	80~110kW·h/T	3575*2250*3270
LT-15T	660L	72kW	80~110kW·h/T	4175*2440*3755
LT-20T	860L	92kW	75~110kW·h/T	4275*2540*3755
LT-28T	1250L	138kW	75~100kW·h/T	5250*2980*4890
LT-35T	1500L	180kW	75~100kW·h/T	5350*3080*4890

### Process



## MaxPro LTE Heat Pump Concentration System for

### Typical Wastewater Types

Crystallization-Prone Wastewater, Scale-Prone Wastewater, High Boiling Point Elevation Wastewater, and Wastewater Containing Heat-Sensitive Materials



### Specifications

Series	Cap.hr	Power	Consumption	Size(m)
WSLT-3400(FC)	3400L	206kW	50~70kW·h/T	11*3.3*9.6
WSLT-6800(FC)	6800L	404kW	50~70kW·h/T	14*3.8*11.0
WDLT-5000(DX)	5000L	276KW	35~55kW·h/T	13*2.9*9.0
WDLT-6500(DX)	6500L	384kW	35~55kW·h/T	14*3.3*9.6
WDLT-9500(DX)	9500L	550KW	35~55kW·h/T	15*3.3*10.0
WDLT-12500(DX)	12500L	736kW	35~55kW·h/T	18*3.5*11.0
WTLT-7300(DX)	7300L	296kW	30~50kW·h/T	15*3.3*9.6
WTLT-9000(DX)	9000L	400kW	30~50kW·h/T	17*3.3*9.6
WTLT-13900(DX)	13900L	580kW	30~50kW·h/T	19*3.3*9.6
WTLT-18000(DX)	18000L	768kW	30~50kW·h/T	22*3.8*11.0

### Process

